

GATHER . SWIM . PLAY. RELAX .

2025 MEMBERSHIP SEASON | NEW MEMBER

ONE PENNWOOD AVENUE | PITTSBURGH, PA 15218

WWW.EDGEWOODCLUB.COM

Welcome to The Edgewood Club



Introduced in 1904, The Edgewood Club is a social, athletic, and civic organization located just minutes from downtown Pittsburgh in the Borough of Edgewood: this will be our 121st season.

The Clubhouse, designed by prominent architect Edward B. Lee, has been recognized for its architectural distinction by the Pittsburgh History and Landmarks Foundation. Historical and elegant, the Club's ballroom has hosted countless weddings, celebrations, and community events. Housed on the second floor is the CC Mellor Memorial Library, on the first floor is a children's library and Fred Rogers play room.

Members enjoy a 25 meter heated pool with diving board, wading pool and play area, locker rooms, and multi-sport courts, offering tennis, pickle ball, basketball, volleyball and bocce. Group and private instruction is available for youth and adults. During swim season there is a full service snack bar and pro shop counter available. Social events and activities for all ages are scheduled throughout the year.

Today, The Edgewood Club remains a centerpiece of Pittsburgh's East End communities and the place for familiar faces and family fun.

2025 New Membership Levels

To our members, The Edgewood Club is more than simply a place to gather, swim, play, and relax. It's a place to interact with like-minded people who understand the importance of community. The Edgewood Club is a place for familiar faces and family fun.

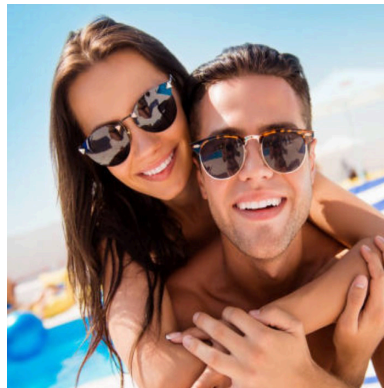
Members gather to enjoy unlimited access to all the aquatic and court facilities along with Clubhouse amenities. In addition to swimming and court play, we connect with a social calendar designed to appeal to a variety of interests.

Membership at The Edgewood Club provides a common ground for families and friends to create and share lifetime memories.



Family Membership

Shall consist of a couple, both of whom shall be members, or a single parent, who shall be a member, and the couple's or single parent's dependent children who are under the age of twenty-one (21) and who reside in the same household with the couple or single parent. Children under the age of 13 must be accompanied by a caregiver at all times.



Couple Membership

Shall consist of a couple who reside in the same household, both of whom shall be members and who do not have any children under the age of twenty-one (21) using the Club.



Individual Membership

Shall consist of one person, twenty-one (21) years of age or older, without dependent children.



2025 MEMBERSHIP WAITLIST

In order to be placed on The Club Membership waiting list, a \$100.00 non-refundable deposit is required. The deposit is applied toward your initial fees.

Membership fees are set by the Board. The Board shall have the power to change deposit fees, membership fees, or other charges if the Board feels that to do so would be in the best interest of the Club.

The Edgewood Club cannot guarantee a date when you will be invited to join. We can attempt to estimate a time line, but because memberships only become available as current members decline to renew, it is difficult to give an accurate timeline. Historically, approximately 50 memberships become available each summer.

To ensure members quality usage, The Edgewood Club instituted a swim membership cap. The current total Swim Membership cap is 325, which includes Family, Couple and Individual memberships. This number may be changed at the Board's discretion.

When an applicant is invited, they will be offered the Full Membership. Declining membership offer will result in dropping to the bottom of the waitlist. Declining a second time will result in being dropped from the waiting list and forfeiting the non-refundable deposit.

Membership deposits are non-transferable and must be used by the applicant.

Members are re-invited to join annually. Members will receive a renewal notification in January with a deadline for renewal in April. Membership renewals must be paid in full by the published deadline.

If members decline to return the following season they will have to return to the waitlist in order to rejoin (and place a non-refundable deposit).

2025 New Membership

You are applying to Membership into The Edgewood Club, and agree to be bound by its Policies, Procedures, Rules and Regulations, both existing and as they may be written. Memberships are issued on an Annual Basis commencing January 1, of each year. Applicant must be 21 years of age or older. The one-time initiation fee is non-refundable and payable upon election to Membership.

The Club reserves the right to cancel Membership privileges at the Board of Directors' discretion in the event of any misconduct or violation of policy. Club fees are subject to change upon a vote by the Board of Directors. Memberships are non-transferrable and non-refundable.

2025 Dues | Fees

FAMILY

Shall consist of a couple, both of whom shall be members, or a single parent, who shall be a member, and the couple's or single parent's dependent children who are under the age of twenty-one (21) and who reside in the same household with the couple or single parent. Children under the age of 13 must be accompanied by a caregiver.

\$1350 dues + \$300 initiation fee + surcharge on credit card

COUPLE

Shall consist of a couple who reside in the same household, both of whom shall be members and who do not have any children under the age of twenty-one (21) using the Club

\$1100 dues + \$300 initiation fee + surcharge on credit card

SINGLE

Shall consist of one person, twenty-one (21) years of age or older, without dependent children.

\$950 dues + \$300 initiation fee + surcharge on credit card

Club memberships are annual running January 1 to December 31. Our swim season is Memorial Day thru Labor Day, court play starts April and continues thru mid-November; weather permitting. Social events are scheduled throughout the year. All social events, programming, group and private instruction are not included in membership dues. Memberships are never prorated and are assessed an initiation fee. Memberships are non-transferable and nonrefundable.

- Payment in full of member level
 - Initiation fee of \$300.00
- Should your membership lapse, your membership will be assessed the current initiation fee as a new member
- Credit card fees apply
- The Club imposes a surcharge on credit cards that is not greater than our cost of acceptance.

2025 Programming

The summer experience revolves around the pool and court facilities. Members enjoy programming for the entire family. Everything needed to plan your summer schedule is readily available in the Members Area of our website. You can register for adult and youth programming, schedule private instruction, as well as make court reservations for single and double tennis play, basketball, and bocce.



Swimming

- Group Swim Lessons
- Private Swim Instruction
- Electric Eels Swim Team



Tennis | Pickleball

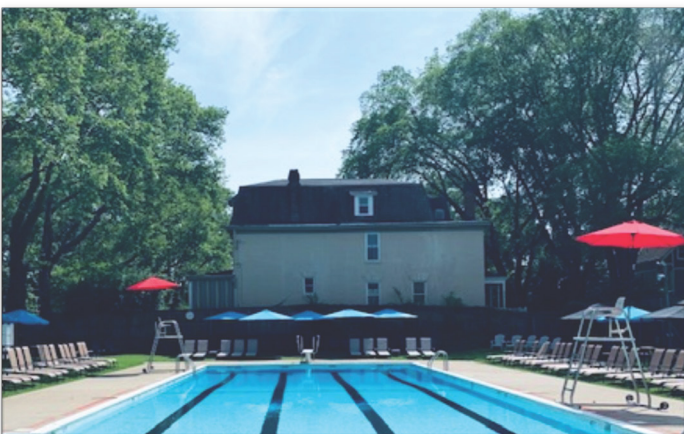
- Group Tennis | Pickleball Clinics & Lessons
- Private Youth & Adult Instruction
 - Men's Night
 - Pickleball Night
- Club Round Robin



Basketball

- Group Basketball Clinics
- Private Basketball Instruction

Court play begins April 1 through mid-November; weather permitting. Swim season begins Memorial Day weekend and concludes on Labor Day; pool opens at 12 Noon and closes at 8pm, Fridays until 9pm.



2025 SEASON BASICS

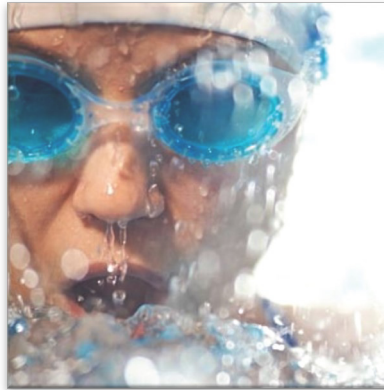
The swim season opens on Memorial Day and concludes Labor Day. The pool is open daily from 12noon to 8pm; on Fridays the pool is open until 9pm. Exceptions included limited hours for the beginning and end of the school year. Members have access to the Event Calendar for pool hours, scheduled programming, and social events. Children under the age of 13 must be accompanied by an adult. All members and guest must register with the sign in desk. A complete list of policies and procedures are post in the members area of the club website.



Caregivers

Family Memberships are permitted to add a nanny to their membership at no fee. The nanny is permitted to bring only your children to the club in absence of both parents. Should a parent be present with the nanny, a \$10 guest fee will apply.

It is necessary to complete your 2022 Nanny Form along with their photo id; available online. A caregiver must be a minimum of 16 years old. We must receive your 2021 Nanny Form and Photo ID on file prior to visiting.



Swim Team

The Edgewood Electric Eels is the biggest part of summer for most club families. A typical season includes 4 away, 4 home, and 2 special meets. Morning or evening practices are scheduled. All parents are required to volunteer.

HOME MEETS

The pool will close at 4pm when The Eels host a visiting team.



Adult Swims

An Adult Lap Swim will be available Monday thru Friday, 8am - 9am beginning in June.

Sat & Sun: A 20 minute adult swim will be held hourly between the :40 and :00 from 12:40 to 8:00

Mon-Fri: A 20 minute adult swim will be held every other hour per the following schedule: 1:40 -2:00, 3:40-4:00, 5:40-6:00 and 7:40-8:00.



GUESTS

- Guests must be accompanied by club member
- Guest usage is limited to 2 visits per month
- Members are responsible for guest fees, all guests must sign in
- Guest fee \$10

SWIM SEASON FOOD & BEVERAGE SERVICE

A full service snack bar, operated by First Class Caterers is available for your enjoyment and convenience. Specials and theme menus are offered throughout the season and during swim meets. For birthday parties and celebrations, FCC offers several packages and can handle most special dietary requests.



OPEN DAILY

- 12 Noon to 8pm
- Grill closes 7pm
- Fridays 12 Noon to 9pm
- Grill closes at 8pm



POOL PARTIES

- Birthday Package Menus
- Party Menus
- Gluten & Vegetarian Options



PAYMENT

- Cash
- Debit & Credit Cards

- Food and beverages are prohibited on the pool decks, by order of the Board of Health. It is the personal responsibility of each guest and his/her family and guests to dispose of all trash in receptacles and return their trays to the Snack Bar.
- No Glass Containers of any kind are permitted, this includes ALL BEVERAGES.
- No Food Deliveries Are Permitted.
- On a restricted basis, The Edgewood Club permits members to bring their own food and beverages into our facilities. You may bring your own food and beverages with the restrictions listed: Pizzas or pizza in boxes, fried chicken in boxes, party subs and other fast food items that cannot be placed in a "brown bag" or give the appearance of take out or party-type food are prohibited.
- No outside food or beverage can be brought into the clubhouse or concession areas.
- Food & Beverage Service for ALL Poolside Parties is to be handled by FCC. We strongly suggest making a reservations at least three weeks in advance for pool parties.



MEMBER EVENTS

The Edgewood Club offers an array of events that foster relationships with family and friends. An ice cream social leads to a summer filled with familiar faces and family fun surrounding swimming and court play. Social events throughout the year include themed dinners, spirit tastings, and more.



- Breakfast with Santa
- Family Valentine's Day Celebration
- Wine Dinner
- Harry Potter Dinner
- Ice Cream Social



Thank you again for your interest in our Club. For questions regarding membership please contact
Ron Gallagher, General Manager | 412.731.3443 | rgallagher@edgewoodclub.com

ONE PENNWOOD AVENUE | PITTSBURGH, PA 15218
WWW.EDGEWOODCLUB.COM